

### Features

- ⊕ High Resolution and Sensitivity
- ⊕ Environmentally Sealed Housing
- ⊕ NTSC/PAL or Y/C Video Output
- ⊕ Wide Dynamic Range and Excellent S/N Ratio
- ⊕ Auto Shutter Exposure Control
- ⊕ Superior Heat Transfer for High Temperature Operation
- ⊕ Optional RS-232 Interface

### General Description

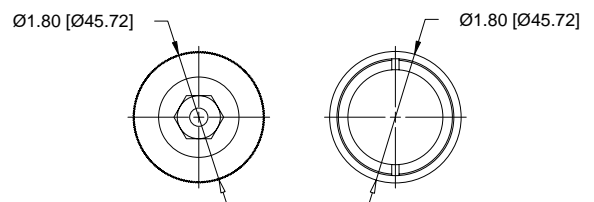
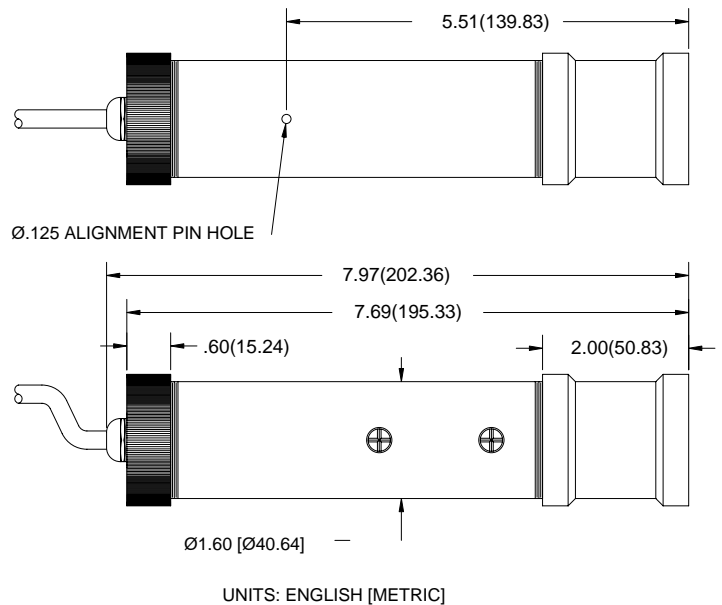
The RSC-A100E ruggedized camera provides high performance in a small package for high resolution applications. A sealed housing protects the camera from the outside environment, extending the environmental operating specifications. Front protection glass and lens can be changed without removing the camera from the fixture. The flexible design allows for use with several different types of lenses. Low light sensitivity is 3 lux at F1.2 thanks to it's 1/2" CCD hyper HAD Imager. The camera offers many standard features in a compact package including: composite or Y/Coutput, higher speed shutter. Many camera functions can be controlled via the optional RS-232 interface. For operation with MIL-STD-704 power sources use the optional RPS-77.

### Video Specifications

Pick-up Device	Interline transfer Hyper HAD CCD
Picture Elements	768(H) x 494 (V)
Signal Systems	NTSC or Y/C, Selectable
Lens Mounting	17mm, (or C-Mount adaptor)
Sync Systems	Internal/External, HD/VD
Horizontal Resolution	470 TV Lines
Sensitivity	3 Lux@ F 1.2, (AGC on)
Auto Shutter	1/60* to 1/4000 second
Adjustable Shutter	1/60* to 1/100,000 second * 1/50 for PAL version
S/N Ratio	Better than 48 dB
Gamma	0.45/1
AGC	On/Off
Power Requirements	12 VDC, 2 Watts
Additional Feature	CCD electronic auto shutter (auto iris)

### Environmental Specifications

Storage Temperature	-55°C to +80°C
Operating Temperature	-40°C to +65°C (+80°C for 30 min.)
Altitude (Norm.Operational)	Sea Level to 200,000 ft.+
Altitude (Non-Operational)	-15,000 ft. to 200,000 ft.+
Altitude (Decompression)	23,000 ft. to 43,000 ft., 15 sec.
Vibration (Operational)	7G's RMS Random 15-2000Hz
Acceleration (Operational)	12 G's in all axes
Shock (Operational)	9 G's, 11ms half-sine, 3 shocks each direction 20 G's 11ms half-sine, 1 shock each direction
Electro-Magnetic Interference	MIL-STD-461, Radiated Emissions (RE02)
Weight	500g



Specifications subject to change without notice.

SE-128, 10/02

