

Features

- Small and Light Weight
- 1/4" Inter-line type Color CCD Sensor
- Backlight Compensation
- NTSC standard, PAL version available
- CCD Iris
- Reverse Scan (Mirror) selectable
- Environmentally Sealed Housing
- Sapphire Window with EMI Protection

General Description

The RBC-D2E/X.X camera is a very rugged and compact color CCD video camera (X.X = lens focal length, see below). The camera is well protected inside an environmentally sealed aluminum housing, finished in Lusterless Desert Tan and with a scratch resistant sapphire window. The housing provides complete EMI protection, and can "breathe" through a humidity filter, minimizing maintenance requirements during long term storage.


Environmental Specifications

Storage Temperature	-46° to +71°
Operating Temperature	-40° to +60°
Altitude (Norm.Operational)*	Sea Level to 50,000 ft.+
Altitude (Non-Operational)*	-15,000 ft. to 60,000 ft.+
Explosive Atmosphere	Sea Level to 50,000 ft. +
Storage Humidity	95% (50°C) to 85% (38°C)
Operating Humidity	5% to 100% relative humidity (condensing)
Vibration (Operational)	MIL-STD 810C, 514.2 (VIII), 70 hrs
Shock (Operational)	MIL-STD 810C, 516.2 (I), 30g, 3 dir
EMI	MIL-STD-461, Radiated RS02, RS03, 50V/m RE02

*Estimates based on similar products, which have been tested

Specifications

Image Sensor	Inter-line Type 1/4" CCD Image Sensor
Effec. Picture Element	752 H x 582 V (PAL) 768 H x 494 V (NTSC)
Signal System	NTSC (PAL version available)
Video Output	1.0Vpp, 75 ohms
Scanning System	2 : 1 Interlace
Synchronization System	Internal
Horizontal Resolution	450 TV Lines
Min. Illumination	1.2 Lux (50 IRE, AGC ON, F1.4)
S/N Ratio	Better than 45dB
Gamma Characteristics	$\gamma = 0.45$
AGC	On/Off (+26 dB max)
Electronic Iris - Off/On	1/60 (1/50) to 1/120,000 sec.
Power Supply Voltage	10.8-13.2VDC
Power Consumption	110ma (@12VDC)
Connector	MIL-38999, Ser III
Weight	398 g (14 oz)
Dimensions	73.91 mm (H) 60.96 mm (W) 69.09 mm (D)
Optional Lenses (X.X)	FL1.9mm Hfov=100.9° (all lenses fixed iris, f=2.8) FL3.0mm Hfov=59.8° FL4.0mm Hfov=45.5° FL6.0mm Hfov=30.4° FL8.0mm Hfov=22.1° FL12.0mm Hfov=15.7°

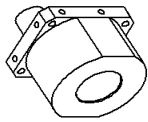
Versions

RBC-D2E/X.X	NTSC, X.X =Lens FL
RBC-D2PE/X.X	PAL, X.X=Lens FL

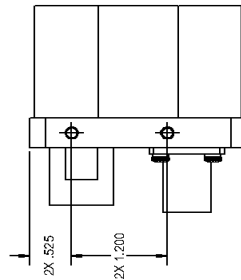
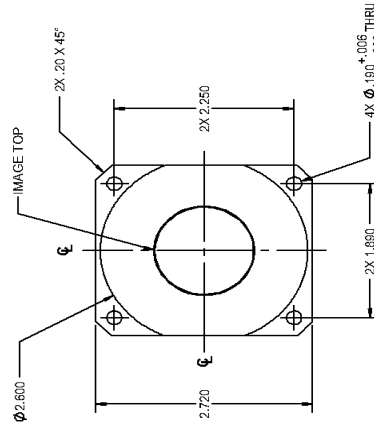
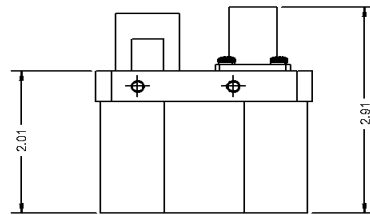
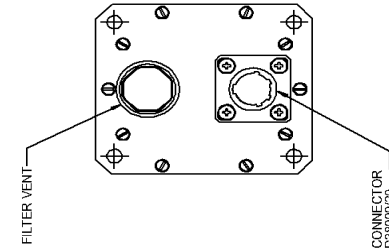
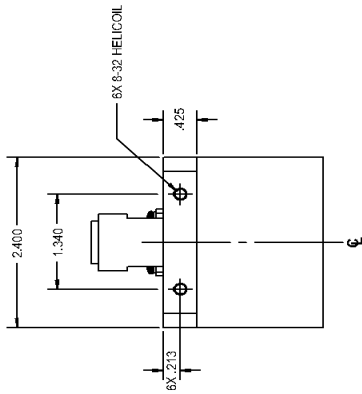
Specifications are subject to change without notice.

21 September, 2011

REV	BY	DESCRIPTION	DATE	APPROVED
A	JC	RELEASED FOR TECHNICAL INFORMATION	11/05/07	FH
B	JC	INCREASED WIDTH TO 2.400		
C	JC	ADDED FILTER CALLOUT FOR P&S PARTNER	11/19/07	FH



ISOMETRIC VIEW
SCALE 1:2



NOTICE
THIS DOCUMENT CONTAINS PROPRIETARY INFORMATION OF SEKAI ELECTRONICS, INC. IT IS THE PROPERTY OF SEKAI ELECTRONICS, INC. AND IS TO BE USED ONLY FOR THE PURPOSES AND IN THE MANNER AND UNDER THE CONDITIONS SPECIFIED IN WRITING OR IN PART, ANY SUCH INFORMATION DISCLOSED IN WRITING OR IN PART, ANY SUCH INFORMATION WITHOUT WRITTEN AUTHORIZATION FROM SEKAI ELECTRONICS, INC.

NOTE: UNLESS OTHERWISE SPECIFIED

ITEM	QTY	DASH NO.	DESCRIPTION	LIST OF MATERIALS	MATL.	FINISH
UNLESS OTHERWISE SPECIFIED, DIMENSIONS ARE IN INCHES. DO NOT MANUALLY UPDATE CAD DRAWING.						
TOLERANCES ARE:						
X = ±.030						
XX = ±.015						
XXX = ±.006						
ANGLES = ±1°						
DO NOT SCALE DRAWING						
FINISH						
HEAT TREAT						

REV	DATE	DESCRIPTION	SCALE	SHEET
B		TOP ASSEMBLY, RBC-D2E AND RBC-MD2E	1:1	1 OF 1
C				

CONNECTOR PINOUT

PIN NO.	SIGNAL TYPE
1	GND (12VDC RETURN)
2	12VDC
3	VIDEO GND (SHIELD)
4	VIDEO
5	REVERSE ON (MIRRORED)
6	N/C