

Features

- Rugged Enclosure
- Light Weight, Weather-Resistant Design
- Bonded, Anti-Reflective 8" Glass Panel
- 1024 x 768 (XGA) Resolution
- NTSC, PAL, and VGA Input / Display Formats
- Simple Eight-Button Control Panel
- LED Standard Backlighting (650 NITS w/out Hi-Bright Option)
- 28VDC


General Description

The RFPD-8-XX rugged flat panel display has been designed for use in harsh environments, ranging from construction and mining vehicles to military armored ground and airborne vehicles.

Each monitor provides an LCD with a proprietary, bonded anti-reflective glass panel for increased ruggedness, viewing angle and illumination. An eight-button control panel provides for the simple control of all display functions and on-screen menus. Proprietary solid-state LED backlighting achieves a typical 600 NITS of illumination, eliminating the use of CFLs containing hazardous materials.

Environmental Specifications

Storage temperature	-35°C to +55°C
Operational Temp-Altitude	MIL-810C, Meth. 504.1 -20°C - +55°C
Humidity	95% (50°C) to 85% (38°C)*
Altitude (Operational)	Sea level to 60,000 ft*
Altitude (Non-Operational)	-15,000 ft to 60,000 ft*
Vibration (Operational)	MIL-810C, 3-axis, 30min/axis, 20-2000Hz, 3Grms
Vibration (Operational Endurance)	MIL-810E, 3-axis, 1 hr/axis, 20-2000Hz, 6.9Grms
Shock (Operational)	MIL-810E, Meth. 516.4 20G, 11ms, 3-axis, 6/axis
Crash Safety Shock	MIL-810E, Meth. 516.4 40G, 11ms, 3-axis, 4/axis
Acceleration	10G's all directions

*Design goals

Specifications

Display type	TFT Active Matrix LCD
Resolution	1024 x 768 pixels
Display area	129(H) x 96(V) mm
Luminance	600 cd/m2 (typical)
Contrast ratio	500:1 (typical)
Viewing angle	(H) 80° (Left, Right) >10:1 (V) 80° (Up), 60° (Down)
Viewing angle	>10:1
Controls	On Screen Menus, buttons
Power Requirements	28VDC, 15W (typical)
Weight	~5 lbs

EMC Specifications

EMI **	MIL-STD-461E, CE102, RE102, RS103 MIL-STD-704, MIL-STD-704
--------	--

** Qualified requires both EMI P/S and EMI LCD Options.

Options

- Hi-Bright LED backlight >1000 NITS
- NVIS backlighting
- EMI shielded front glass
- Heater for lower temperature operation
- Touch screen and remote controls
- 12VDC, 110-220VAC power supplies
- Custom frequency inputs & formats
- Custom enclosures & mounting
- Full MIL-STD-461E Qualified Display (req. both EMI P/S and EMI LCD options)

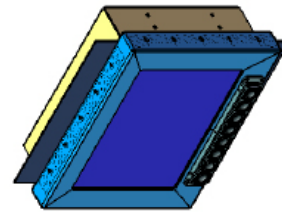
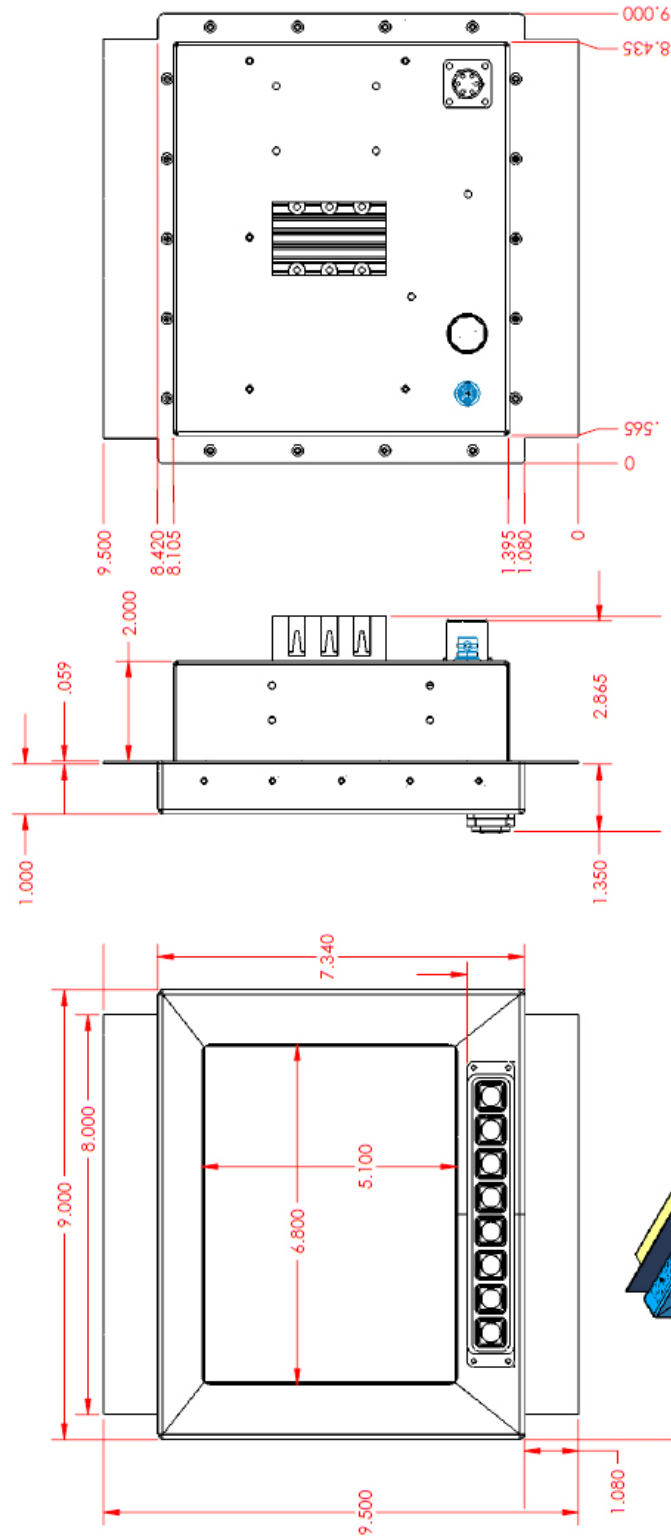
Specifications are subject to change without notice.

18 Sept, 2012



RFPD-8-XX

Rugged 8" Flat Panel Display



NOTE: Drawing for RFPD-8-01