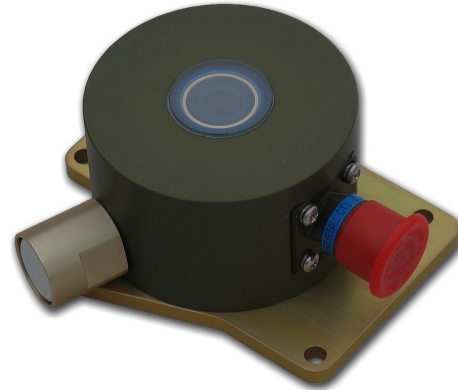


### Features

- ⊕ Small and Light Weight
- ⊕ 1/3" Inter-line type Color CCD Sensor
- ⊕ Backlight Compensation
- ⊕ NTSC standard, PAL version available
- ⊕ CCD Iris
- ⊕ Reverse Scan (Mirror) selectable
- ⊕ Environmentally Sealed Housing
- ⊕ Sapphire Window with EMI Protection



### General Description

The RPC-653ER/X.X camera is a very rugged and compact color CCD video camera (X.X = lens focal length, see below). The camera is well protected inside an environmentally sealed aluminum housing, finished in olive-drab anodized and with a scratch resistant sapphire window. The housing provides complete EMI protection, and can "breathe" through a humidity filter, minimizing maintenance requirements during long term storage.

### Environmental Specifications

<b>Storage Temperature</b>	46° to +71°
<b>Operating Temperature</b>	-40° to +60°
<b>Altitude (Norm.Operational)*</b>	Sea Level to 50,000 ft. +
<b>Altitude (Non-Operational)*</b>	-15,000 ft. to 60,000 ft. +
<b>Explosive Atmosphere</b>	Sea Level to 50,000 ft. +
<b>Storage Humidity</b>	95% (50°C) to 85% (38°C)
<b>Operating Humidity</b>	5% to 100% relative humidity (condensing)
<b>Vibration (Operational)</b>	MIL-STD 810C, 514.2 (VIII), 70 hrs
<b>Shock (Operational)</b>	MIL-STD 810C, 516.2 (I), 30g, 3 dir
<b>EMI</b>	MIL-STD-461, Radiated RS02, RS03, 50V/m RE02

\*Estimates based on similar products, which have been tested

### Versions

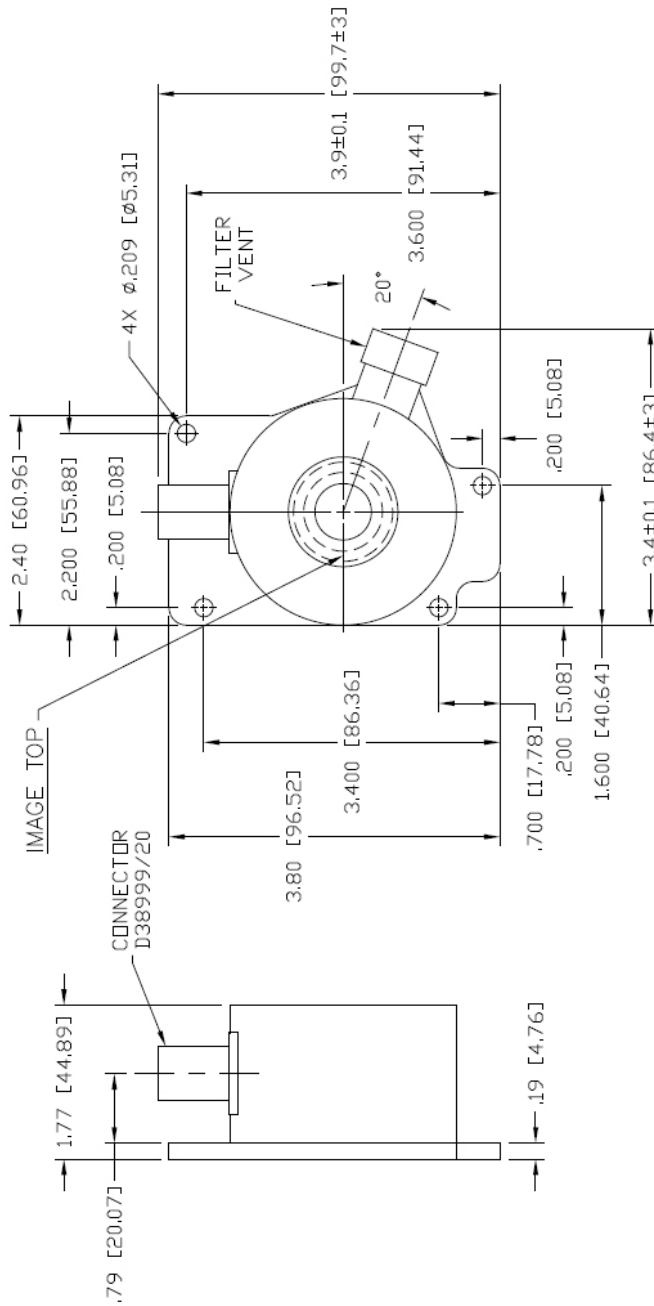
RPC-653ER/X.X	NTSC, X.X = Lens FL
RPC-653PER/X.X	PAL, X.X = Lens FL

### Specifications

<b>Image Sensor</b>	Inter-line Type 1/3" CCD Image Sensor
<b>Effec. Picture Element</b>	752 H x 582 V (PAL) 768 H x 494 V (NTSC)
<b>Scanning Frequency</b>	15.734KHz (H) 59.94Hz (V)
<b>Signal System</b>	NTSC (PAL version available)
<b>Video Output</b>	1.0Vpp, 75 ohms
<b>Scanning System</b>	2 : 1 Interlace
<b>Horizontal Resolution</b>	450 TV Lines
<b>Minimum Illumination</b>	1.0lx (50 IRE, AGC ON, F1.4)
<b>S/N Ratio</b>	48 dB or greater
<b>Gamma Correction</b>	$\gamma = 0.45$
<b>AGC (0 dB to +18 dB)</b>	ON/OFF
<b>White Balance</b>	ATW/AWB
<b>BLC Feature</b>	ON/OFF selectable
<b>Mirror Function</b>	ON/OFF selectable
<b>Electronic Shutter (Iris)</b>	1/60 to 1/120,000 sec. selectable
<b>Power Supply Voltage</b>	10.8-13.2VDC
<b>Power Consumption</b>	90ma (@12VDC)
<b>Connector</b>	MIL-38999, Ser III
<b>Weight</b>	357 g (12.6 oz)
<b>Dimensions</b>	44.89mm (H) 85.35 mm (W) 96.52 mm (D)
<b>Optional Lenses (X.X)</b>	FL2.3mm Hfov=114.4° FL4.0mm Hfov=67.7° FL5.6mm Hfov=46.5° FL8.0mm Hfov=31.6° FL16.0mm Hfov=15.3° FL25.0mm Hfov=9.6°

Specifications are subject to change without notice.

21 September, 2011



PIN CONFIGURATION MIL CONNECTOR

PIN NO.	SIGNAL TYPE
1	12VDC RETURN
2	+12 VDC
3	VIDEO RETURN (SHIELD)
4	VIDEO (CENTER)
5	REVERSE OFF (MIRROR OFF)
6	N/C

