

Features

- ⊕ Small and Light Weight
- ⊕ 1/3" Inter-line type Monochrome CCD
- ⊕ EIA standard, CCIR version available
- ⊕ Backlight Compensation
- ⊕ CCD Iris
- ⊕ Reverse Scan (Mirror) selectable
- ⊕ Environmentally Sealed Housing
- ⊕ Sapphire Window with EMI Protection

General Description

The RPC-M651ER/X.X camera is a very rugged and compact monochrome CCD video camera (X.X = lens focal length, see below). The camera is well protected inside an environmentally sealed aluminum housing, finished in olive-drab anodized and with a scratch resistant sapphire window. The housing provides complete EMI protection, and can "breathe" through a humidity filter, minimizing maintenance requirements during long term storage.

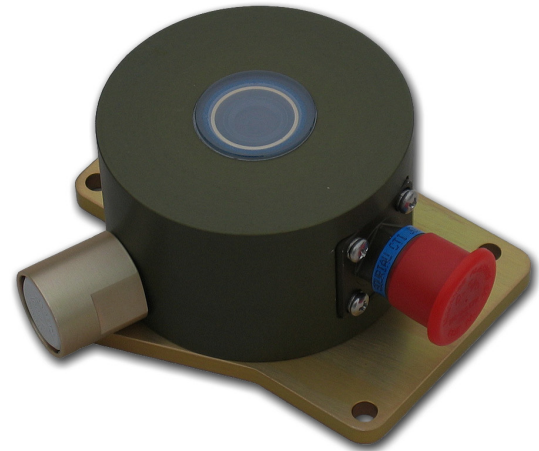
Environmental Specifications*

Storage Temperature	-46° to +71°
Operating Temperature	-40° to +60°
Altitude (Norm. Operational)*	Sea Level to 50,000 ft. +
Altitude (Non-Operational)*	-15,000 ft. to 60,000 ft. +
Explosive Atmosphere	Sea Level to 50,000 ft. +
Storage Humidity	95% (50°C) to 85% (38°C)
Operating Humidity	5% to 100% relative humidity (condensing)
Vibration (Operational)	MIL-STD 810C, 514.2 (VIII), 70 hrs
Shock (Operational)	MIL-STD 810C, 516.2 (I), 30g, 3 dir
EMI	MIL-STD-461, Radiated RS02, RS03, 50V/m RE02

*Estimates based on similar products, which have been tested

Versions:

RPC-M651ER/X.X NTSC, X.X = Lens FL
 RPC-C651ER/X.X PAL, X.X = Lens FL



Specifications

Image Sensor	1/3" Inter-line type Monochrome CCD Sensor
Effec. Picture Elements	752 H x 582 V (PAL) 768 H x 494 V (NTSC)
Signal System	EIA (CCIR version available)
Video Output	1.0Vpp, 75 ohms
Scanning System	2: 1 Interlace
Synchronization System	Internal
Horizontal Resolution	500 TV Lines
Min. Illumination	0.2 Lux (50 IRE, AGC ON, F1.4)
S/N Ratio	48dB or greater
Gamma Correction	$\gamma = 0.45$
AGC	On/Off (0 dB to + 18 dB)
Electronic Iris - Off/On	1/60 (1/50) to 1/120,000 sec.
Power Supply Voltage	10.8-13.2VDC
Power Consumption	90ma @ 12VDC
Connector	D38999/26WA35SN Plug M85049/38-9W Strain Relief
Weight	357 g (12.6 oz)
Dimensions	44.89mm (H) 85.35 mm (W) 96.52 mm (D)
Optional Lenses (X.X)	FL2.3mm Hfov=114.4° (all lenses fixed iris, f=2.8) FL4.0mm Hfov=67.7° FL5.6mm Hfov=46.5° FL8.0mm Hfov=31.6° FL16.0mm Hfov=15.3° FL25.0mm Hfov=9.6°

Specifications are subject to change without notice.

21 September, 2011

