

Product Overview

The SCRC-413-24 is a NTSC / PAL analog output camera that offers outstanding color fidelity and full, broadband response for high resolution color applications. **This camera offers compatability with the legacy Sekai RSC-B313.**

This camera is excellent for airborne applications, and other harsh environments. Low light sensitivity is <3 lux at F1.2 thanks to the modern Global shutter CMOS sensor. This camera offers many standard features in a compact package, including composite or Y/C output, high speed shutter, TTL (through-the-lens) auto/manual white balance, and AGC on/off functionality. The camera supports user selectable NTSC or PAL outputs.

Typical Applications

- Heads up cockpit camera monitoring critical instrumentation and/or exterior views
- Mission Recording and Analysis

Features and Electrical Specifications

- **Fit, Form and functional replacement to the Sekai RSC-B313**
- **1/2.9" Global Shutter CMOS sensor**
- **Support for both NTSC and PAL configuration**
- **Superior heat transfer for high temperature operation**
- **Wide Dynamic Range and excellent S/N Ratio**
- **High Sensitivity**
- **White Pixel Compensation**
- **AGC (ON/OFF),**
- **Auto White Balance (ON/OFF)**
- **Ruggedized for Harsh Environments**
- Selectable NTSC or PAL output concurrent with Y/C analog output
- **Miniature size**
- **RS-232 Remote Interface with many option**
- **24 inch cable length from Camera Head to Electronics Unit, can be ordered with custom cable lengths**
- Power Requirements 10.5-15 VDC, 3.6 W
- Lens Mounting 17mm, (or C-Mount adaptor)

SRC 413-24

CELEBRATING
SINCE 1982 **40** YEARS
OF INNOVATION

Remote Head Color Camera

Ordering# 800-0000713-000

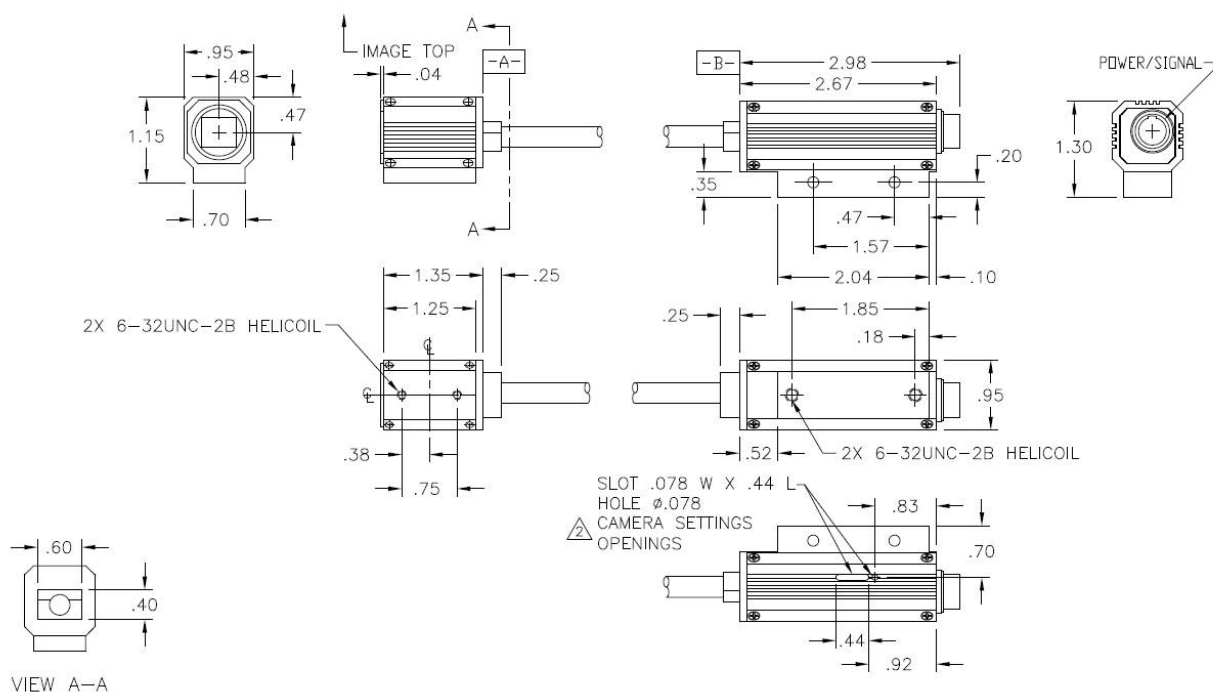


Environmental Specifications*

Military Standard:	MIL-STD-810G
Storage Temperature	-54°C to +85°C (Const & Cycling)
Operating Temperature	-40°C to +65°C startup & continuous
Altitude (Operational)	Sea Level to 60,000 ft
Altitude (Decompression)	8,000 to 40,000 ft, 15 sec**
Humidity (Aggravated)	95% (60°C) to 85% (30°C)
Humidity (Operating)	5% to 95% Relative Humidity (RH)
at 30°C (non-condensing)	
Explosive Atmosphere	Sea Level & 40,000 ft , +55°C
Vibration (Operational)	Jet Aircraft, 14.2 G's RMS Random 15-2000Hz
	Helicopter, sine on random UH-60 type profile
Acceleration (Operational)	40 G's Forward, 20 G's in other axes
Shock (Operational)	40 G's, 15-23ms SRS Shock 3 shocks each direction
EMI	MIL-STD-461F
	Radiated Emissions (RE102)
	Fixed Wing and Helicopter

* Target values only. Consult with Sekai for the latest status / reports.

Signal Pin No.	Sync signal types		
	External Sync signal		Internal Sync signal
	HD,VD	VS Input	
1	GND	GND	GND
2	+12 V	+12 V	+12 V
3	VBS/Y Output (GND)	VBS/Y Output (GND)	VBS/Y Output (GND)
4	VBS/Y Output (signal)	VBS/Y Output (signal)	VBS/Y Output (signal)
5	HD Input (GND)	-	-
6	HD Input (signal)	-	-
7	VD Input (signal)	VS/VBS Input (signal)	-
8	GND (-/C)	GND (-/C)	GND (-/C)
9	-/C Output (signal)	-/C Output (signal)	-/C Output (signal)
10	RS-232C (TXD) *		
11	RS-232C (RXD) *		
12	VD Input (GND)	VS/VBS Input (GND)	GND
	RS-232C (GND)		



Proprietary