

Product Overview

The RSC-C100 is a NTSC / PAL analog out-put camera that offers outstanding color fidelity and full, broadband response for high resolution color applications. This camera offers compatability with the legacy Sekai RSC-B100.

This camera is excellent for airborne applications, and other harsh environments. Low light sensitivity is <3 lux at F1.2 thanks to the modern Global shutter CMOS sensor. This camera offers many standard features in a compact package, including composite or Y/C output, high speed shutter, TTL (through-the-lens) auto/manual white balance, and AGC on/off functionality. The camera supports user selectable NTSC or PAL outputs. The RPS-A77 and RPS-78 are available for operation with MIL-STD-704 power sources. These rugged power supplies provide regulated 12 VDC to the camera from 20-30 VDC unregulated sources.

Ruggedized Color Camera

Ordering# 800-0000729-001 NTSC

800-0000729-002 PAL



Features and Electrical Specifications

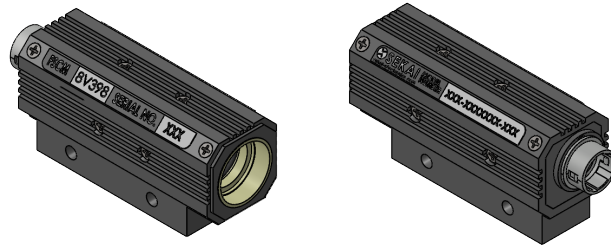
- **Fit, Form and functional replacement to the Sekai RSC-B100**
- **1/2.9" Global Shutter CMOS sensor**
- Selectable NTSC or PAL output concurrent with Y/C analog output
- **Superior heat transfer for high temperature operation**
- **Wide Dynamic Range and excellent S/N Ratio**
- **High Sensitivity**
- **High Resolution (470 Horizontal TV Lines) NTSC**
- **White Pixel Compensation**
- **AGC (ON/OFF),**
- **Auto White Balance (ON/OFF)**
- **Ruggedized for Harsh Environments**
- **Miniature size**
- **RS-232 Remote Interface with many options**
- Lens Mounting 17mm, (or C-Mount adaptor)
- Power Requirements 10.5-15 VDC, 3.6 W

Environmental Specifications*

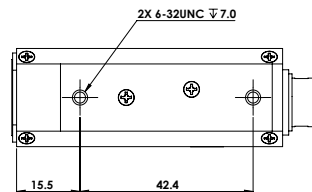
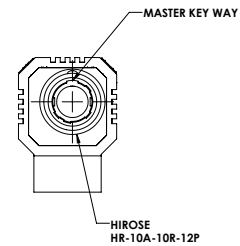
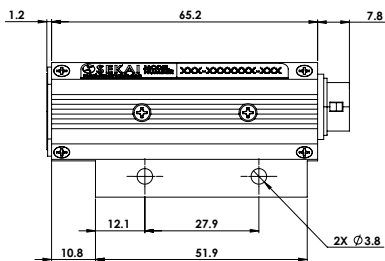
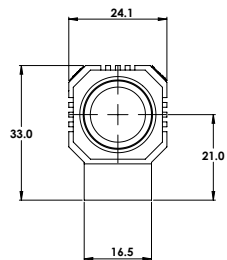
Military Standard:	MIL-STD-810G
Storage Temperature	-54°C to +85°C (Const & Cycling)
Operating Temperature	-40°C to +65°C startup & continuous
Operating Temperature	-54°C after startup at -40°C
Altitude (Operational)	Sea Level to 60,000 ft
Altitude (Decompression)	8,000 to 40,000 ft, 15 sec**
Humidity (Aggravated)	95% (60°C) to 85% (30°C)
Humidity (Operating)	5% to 95% Relative Humidity (RH)
Explosive Atmosphere	Sea Level & 40,000 ft, +55°C
Vibration (Operational)	Jet Aircraft, 14.2 G's RMS Random

NOTICE
 THIS DOCUMENT CONTAINS PROPRIETARY INFORMATION OF SEKAI ELECTRONICS INC. NEITHER RECEIPT NOR POSSESSION THEREOF CONVEYS ANY RIGHT TO REPRODUCE, USE OR DISCLOSE IN WRITING OR IN PART, ANY SUCH INFORMATION WITHOUT WRITTEN AUTHORIZATION FROM SEKAI ELECTRONICS INC.

PIN NO.	SYNC SIGNAL TYPES		
	EXTERNAL SYNC SIGNAL	INTERNAL SYNC SIGNAL	INTERNAL SYNC SIGNAL
1	HD, VD	VS INPUT	GND [EARTH]
2	GND [EARTH]	GND [EARTH]	GND [EARTH]
3	+12V	+12V	+12V
4	VBS/Y OUTPUT [EARTH]	VBS/Y OUTPUT [EARTH]	VBS/Y OUTPUT [EARTH]
5	VBS/Y OUTPUT [EARTH]	VBS/Y OUTPUT [EARTH]	VBS/Y OUTPUT [EARTH]
6	VBS/Y OUTPUT [EARTH]	VBS/Y OUTPUT [EARTH]	VBS/Y OUTPUT [EARTH]
7	HD INPUT [EARTH]	-	-
8	HD INPUT [EARTH]	-	-
9	VD INPUT [EARTH]	VD INPUT [EARTH]	GND [EARTH]
10	GND [-/C]	GND [-/C]	GND [-/C]
11	-/C OUTPUT [EARTH]	-/C OUTPUT [EARTH]	-/C OUTPUT [EARTH]
12	VD INPUT [EARTH]	VD INPUT [EARTH]	GND [EARTH]
		RS-232C [EARTH]	



ISOMETRIC VIEWS



NOTE: DIMENSIONS SPECIFIED IN DRAWING ARE IN MM.

SEKAI ® ELECTRONICS INC.			
CAMERA, RUGGEDIZED COLOR, ANALOG, RSC-C100			
SIZE	CAGE CODE	DWG. NO.	REV
D	8V398	800-0000729-000-ICD	1
SCALE: 2:1		SHEET 1 OF 1	