

General Description

The SRC-150 camera family is a very rugged and compact 720/1080 HD CMOS digital video camera with the connector on the bottom of the chassis. This camera is designed to offer minimal “glass to glass” latency for critical, real-time operations for situational awareness and blind-spot coverage for helicopters in SAR, law enforcement, commercial offshore operations, as well as coast guard applications. The camera is well protected meeting the electrical, mechanical and environmental requirements of DO-160G defined below. The advanced video circuits are housed inside a light, environmentally sealed aluminum housing, finished in black anodize, with a scratch resistant sapphire window. The housing can “breathe” through a humidity filter, keeping moisture out while allowing pressure to equalize at various altitudes.

Specifications

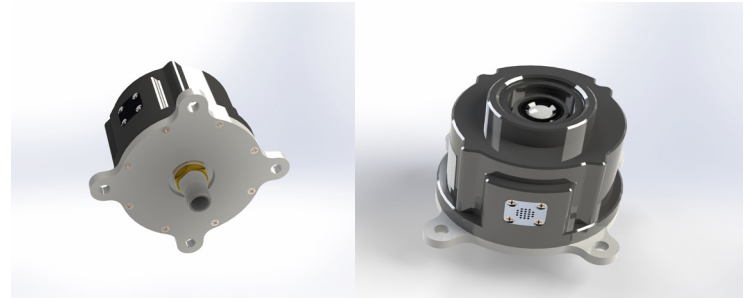
Image Sensor	1/2.8 2.38MP CMOS
Effic. Picture Element	1920 H x 1080 V (1080p) 1280 H x 720 V (720p)
TV Format	Full HD (1080/60p,50p, 30p, 25p, 60i, 50i, 720/60p, 50p)
Video Output	HD-SDI (3G in 1080/50-60p)
Scanning System	Progressive
Horizontal Resolution	900 TV Lines (w/ HD-SDI)
Min. Illumination	0.43 lx (50 IRE, 1/30)
S/N Ratio	More than 50dB
Gamma Characteristics	$\gamma = 0.45$, Settable
AGC	0-42 dB
Electronic Iris	1/30(25) - 1/10,000 sec.
White Balance	Auto/Pre-set
Mirror & Flip	Selectable ON/OFF
Serial Interface*	Control
Power Interface	PoSDI
Power Consumption	2.4W
Connector	TNC
Weight	258 g
Lens 1.97mm	122° HFOV
Lens 2.5mm	94° HFOV
Lens 2.9mm	85° HFOV
Lens 3.9mm	70° HFOV

Camera Requires SRDM Video Distribution Module

Ruggedized PoSDI Color Camera with Bottom Connector

Features

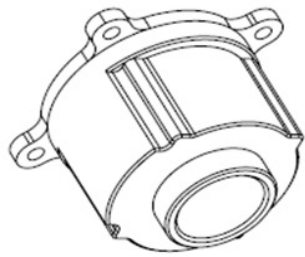
- Power over SDI (PoSDI) and remote camera commanding over a single coax minimizes installation requirements
- Very Low Latency
- 1/2.8 2.38MP CMOS Sensor
- Compact and Lightweight
- High Quality 3G/HD-SDI Digital Video Output
- Reverse Scan (Mirror) Capable
- Environmentally Sealed Housing



Environmental Specifications*

DO-160G Specifications

Temperature/Altitude	RTCA/DO-160G, Sec. 4, Cat B2 & F1
Temperature Variation	RTCA/DO-160G, Sec. 5, Cat B
Humidity	RTCA/DO-160G, Sec. 6, Cat C
Operational Shocks & Crash Safety	RTCA/DO-160G, Sec. 7, Cat B
Vibration	RTCA/DO-160G, Sec. 8, Cat U (x1.5)
Explosion Proofness	RTCA/DO-160G, Sec. 9, Cat E
Waterproofness	RTCA/DO-160G, Sec. 10, Cat S
Fluid Susceptibility	RTCA/DO-160G, Sec. 11, Cat F
Sand and Dust	RTCA/DO-160G, Sec. 12, Cat S
Fungus	RTCA/DO-160G, Sec. 13, Cat F
Salt Fog	RTCA/DO-160G, Sec. 14, Cat T
Power Input	RTCA/DO-160G, Sec. 16, Cat BXI
Voltage Spike	RTCA/DO-160G, Sec. 17, Cat B
Radio Frequency Susceptibility	RTCA/DO-160G, Sec. 20, Cat TT
Emission of Radio Frequency Energy	RTCA/DO-160G, Sec. 21, Cat M
Lightning Induced Transient Susceptibility	RTCA/DO-160G, Sec. 22, Cat A3J3L3
Icing	RTCA/DO-160G, Sec. 24, Cat A
Electrostatic Discharge	RTCA/DO-160G, Sec. 25, Cat A
Fire Resistance & Flammability	RTCA/DO-160G, Sec. 26, Cat C



ISOMETRIC VIEW

