

Features

- Monochrome Low-light Image Core
- Sensor Resolution 1280x1024 pixel
- Rolling Shutter
- High Dynamic Range >60dB
- HD-SDI Video Interface 720p60
- Integrated Lens 6mm F1.8
- 97 degrees of horizontal Field of View
- Very low latency
- CAN/RS422 Control
- Rugged IP 68 Enclosure
- Scratch Resistant Window
- Operation Temperature -40°C to +60°C
- Storage Temperature -55°C to +80°C
- Operating Humidity 5% to 95% RH, non-condensing
- Vibration (Operational) MIL-STD 810C, 514.2 (VIII), 70 hrs (Design Goal)
- Shock (Operational) MIL-STD 810C, 516.2(I), 30g, 3 dir (Design Goal)

Overview

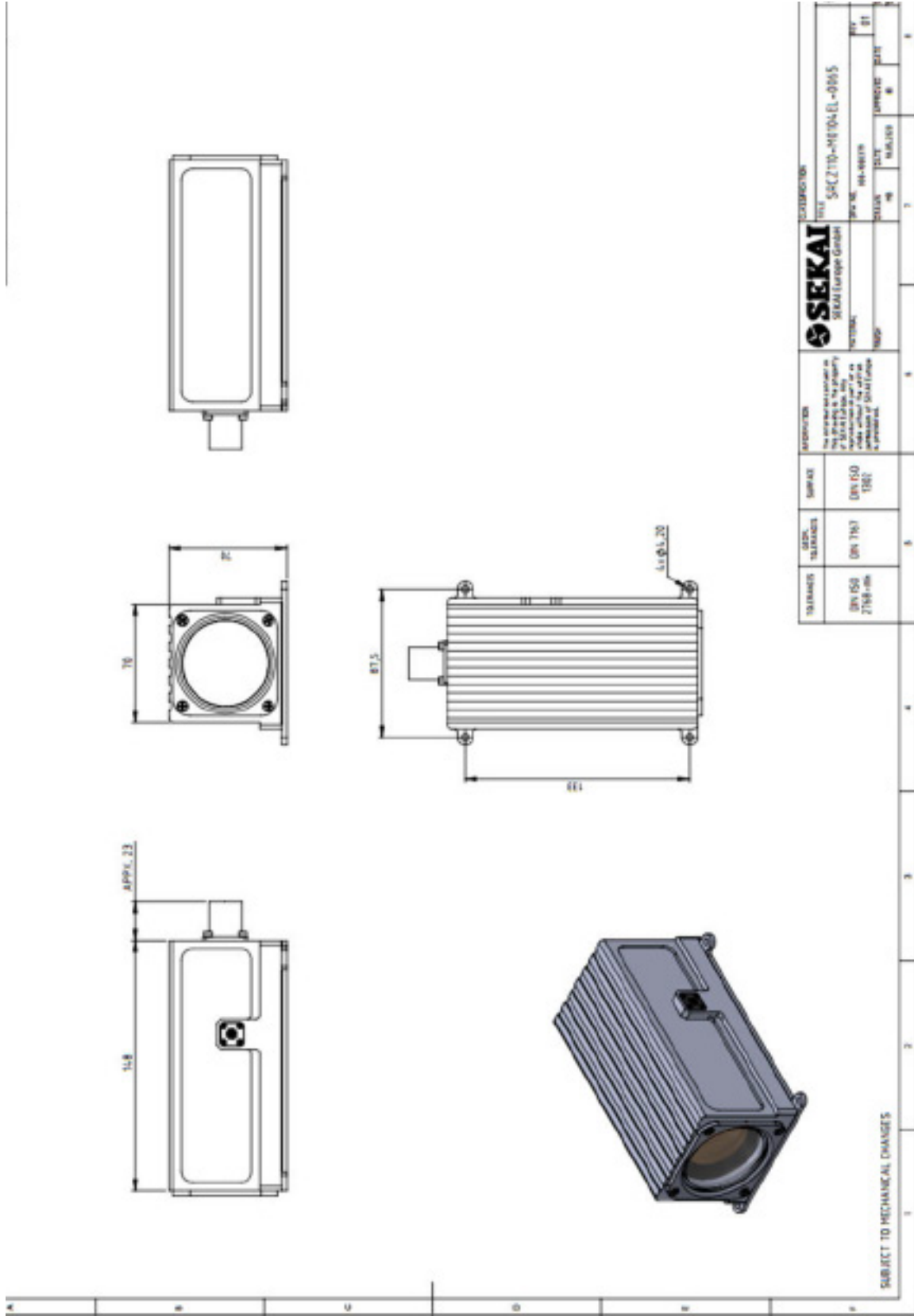
The SEKAI Low Light Level Camera is a fully ruggedized low light camera utilizing a high-performance imaging sensor optimized for low light level imaging.

The fully solid-state CMOS sensor provides excellent imaging across varying light conditions, from daylight to very low-light levels.

The SEKAI SRCZ110-M0104EI-0065 provides high-definition video at 60 frames per second, without any need for external cooling.

The camera has two connectors on the back featuring: the HD-video signal, the power- and control lines (CAN bus or a serial interface RS422).

The camera provides high quality, low latency un-compressed video over an HD-SDI output and comes in a compact size to use in a variety of applications, e.g. as a Drivers-aid Camera or for vision enhancement.



SEKAI		SEKAI Europe GmbH		SEKAI		SEKAI		SEKAI		SEKAI		
TOLERANCES	DIM. 50 276 ± 0.16	DIM. 76.3	DIM. 60 1281	SURFACE	No external contact in the PCB is the property of SEKAI. The user is responsible for all connections and for the correct use of the component. SEKAI Europe is not responsible.		SEKAI Europe GmbH SEKAI ME 104-104 EL-0005		SEKAI ME 104-104 EL-0005		SEKAI ME 104-104 EL-0005	
DATE												
DESIGNED												
DRAWN												
CHECKED												
APPROVED												