



eWindow360 SA IP Camera

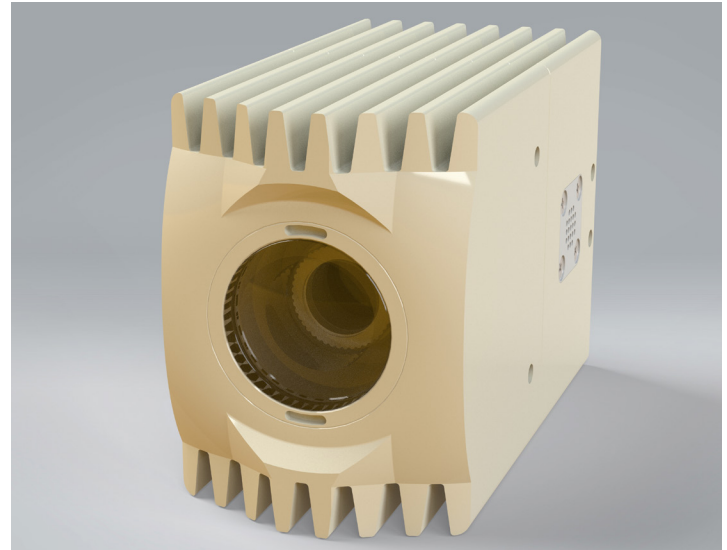
Ordering # 800-1000510-001



Ordering Part # 800-1000510-001

Highlights

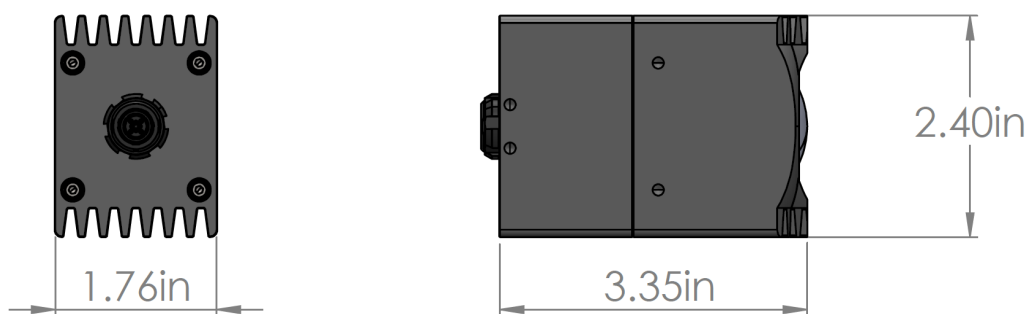
- PoE - Power over Ethernet, no power cable needed
- low latency
- 3.2 Mpixel (2064 x 1544 pixels) CMOS Image sensor
- Global shutter - eliminates all artifacts and issues commonly associated with electronic rolling shutter sensors
- Automatic White Balance, Gain and Exposure Control



Technical Information

Signal System	GbE - Gigabit Ethernet
Power Supply	Power over Ethernet (PoE IEEE 802.3af)
Image Sensor	1/1.8" CMOS image sensor with pixel size of 3.45 μ m
Shutter	Electronic Global Shutter
Power Consumption	4.3 Watts
Operating Temperature	-20 to 70°C
Frame Rate	user selectable
Video Output Format	Mono 8, Bayer RGB 8, Bayer RGB 12p, Bayer RG12, YUV 4:2:2 (YUYV) Packed, YUV 4:2:2 Packed
Pixel Bit Depth	10 or 12 bits
Dimensions [mm]	1.76" x 2.4" x 3.35" inches
Interface	Gigabit Ethernet (1,000 Mbit/s)
Compliant to MIL-STD-461	DO-160, MIL-STD-810, (Design Goal)
Focal length	1.98mm
FOV	H:182°, V: 135° (others available on request)

Dimensions:



Connector Pinout

ODU AMP S11YBR-PD8XCD0-0000

1	white/green	BI_DA+
2	green	BI_DA-
3	white/brown	BI_DD+
4	brown	BI_DD-
5	white/blue	BI_DC-
6	blue	BI_DC+
7	white/orange	BI_DB+
8	orange	BI_DB-