

Features

- ⊕ Small and Light Weight
- ⊕ 1/3" Inter-line type Monochrome CCD
- ⊕ EIA standard, CCIR version available
- ⊕ Backlight Compensation
- ⊕ CCD Iris
- ⊕ Reverse Scan (Mirror) selectable
- ⊕ Environmentally Sealed Housing
- ⊕ Sapphire Window with EMI Protection

General Description

The RBC-MD2EX.X camera is a very rugged and compact monochrome CCD video camera (X.X = lens focal length, see below). The camera is well protected inside an environmentally sealed aluminum housing, finished in Lusterless Desert Tan and with a scratch resistant sapphire window. The housing provides complete EMI protection, and can "breathe" through a humidity filter, minimizing maintenance requirements during long term storage.


Environmental Specifications

Storage Temperature	-46° to +71°
Operating Temperature	-40° to +60°
Altitude (Norm. Operational)*	Sea Level to 50,000 ft.+
Altitude (Non-Operational)*	-15,000 ft. to 60,000 ft.+
Explosive Atmosphere	Sea Level to 50,000 ft. +
Storage Humidity	95% (50°C) to 85% (38°C)
Operating Humidity	5% to 100% relative humidity (condensing)
Vibration (Operational)	MIL-STD 810C, 514.2 (VIII), 70 hrs
Shock (Operational)	MIL-STD 810C, 516.2 (I), 30g, 3 dir
EMI	MIL-STD-461, Radiated RS02, RS03, 50V/m RE02

*Estimates based on similar products, which have been tested

Specifications

Image Sensor	1/3" Inter-line type Monochrome CCD Sensor
Effec. Picture Elements	752 H x 582 V (PAL) 768 H x 494 V (NTSC)
Signal System	EIA (CCIR version available)
Video Output	1.0Vpp, 75 ohms
Scanning System	2 : 1 Interlace
Synchronization System	Internal
Horizontal Resolution	500 TV Lines
Min. Illumination	0.2 Lux (50 IRE, AGC ON, F1.4)
S/N Ratio	48dB or greater
Gamma Correction	$\gamma = 0.45$
AGC	On/Off (0 dB to +18 dB)
Electronic Iris - Off/On	1/60 (1/50) to 1/120,000 sec.
Power Supply Voltage	10.8-13.2VDC
Power Consumption	90ma (@12VDC)
Connector	MIL-38999, Ser III
Weight	396 g (14 oz)
Dimensions	73.91 mm (H) 60.96 mm (W) 69.09 mm (D)
Optional Lenses (X.X)	FL2.3mm Hfov=114.4° FL4.0mm Hfov=67.7° FL5.6mm Hfov=46.5° FL8.0mm Hfov=31.6° FL16.0mm Hfov=15.3° FL25.0mm Hfov=9.6°
(all lenses fixed iris, f=2.8)	

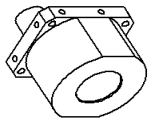
Versions

RBC-MD2E/X.X	NTSC, X.X =Lens FL
RBC-CD2E/X.X	PAL, X.X=Lens FL

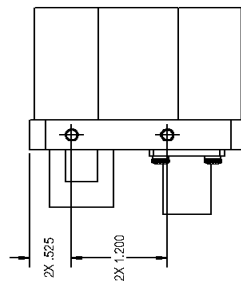
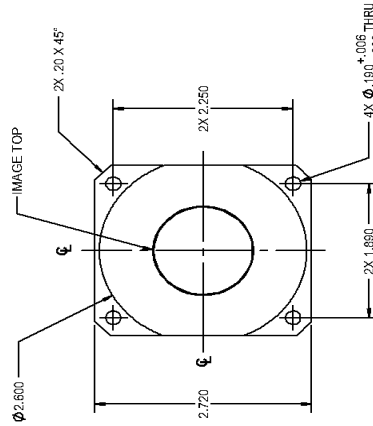
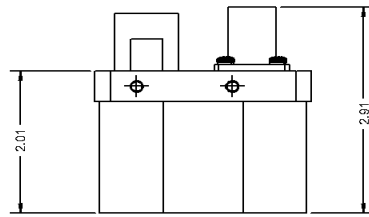
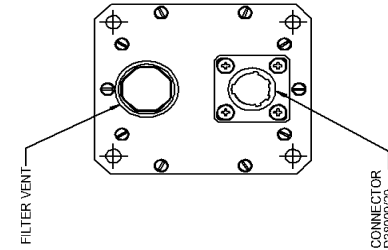
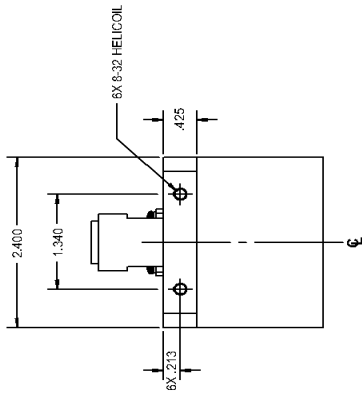
Specifications are subject to change without notice.

21 September, 2011

REV	BY	DESCRIPTION	DATE	APPROVED
A	JC	RELEASED FOR TECHNICAL INFORMATION	11/05/07	FH
B	JC	INCREASED WIDTH TO 2.400		
C	JC	ADDED FC ITEM CALLOUT FOR PINS 3 & PARTNER	11/19/07	FH



ISOMETRIC VIEW
SCALE 1:2



CONNECTOR PINOUT

PIN NO.	SIGNAL TYPE
1	GND (12VDC RETURN)
2	12VDC
3	VIDEO GND (SHIELD)
4	VIDEO
5	REVERSE ON (MIRRORED)
6	N/C

NOTICE
THIS DOCUMENT CONTAINS PROPRIETARY INFORMATION OF SEKAI ELECTRONICS, INC. IT IS THE PROPERTY OF SEKAI ELECTRONICS, INC. AND IS TO BE USED ONLY FOR THE PURPOSES AND IN THE MANNER SPECIFIED HEREIN. IT IS NOT TO BE REPRODUCED, COPIED, DISCLOSED IN WRITING OR IN PART, ANY SUCH INFORMATION WITHOUT WRITTEN AUTHORIZATION FROM SEKAI ELECTRONICS, INC.

NOTE: UNLESS OTHERWISE SPECIFIED

ITEM	QTY	DASH NO.	DESCRIPTION	LIST OF MATERIALS	MATL.	FINISH
UNLESS OTHERWISE SPECIFIED, DIMENSIONS ARE IN INCHES. DO NOT MANUALLY UPDATE CAD DRAWING.						
TOLERANCES ARE:						
X = ±.030						
XX = ±.015						
XXX = ±.006						
ANGLES = ±1°						
DO NOT SCALE DRAWING						
FINISH						
HEAT TREAT						
REVISION						
DATE						
BY						
CHECKED						
APPROVED						
SEKAI ELECTRONICS			TOP ASSEMBLY, RBC-D2E AND RBC-MD2E			
DRAWN BY: J. CARILLO			DWG. NO.: 98RBCD2E-01			
CHECKED BY: J. CARILLO			REV: B			
DATE: 11/05/07			SCALE: 1:1			
MATERIAL: C			SHEET: 1 OF 1			