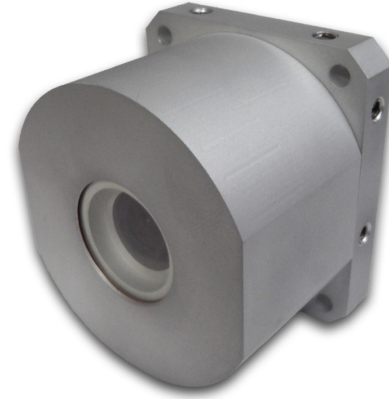


### Features

- ⊕ 1/3" Color CMOS Sensor
- ⊕ 1280 x 720 HD Resolution
- ⊕ 720p/60, 720p/59.94, 720p/50 selectable
- ⊕ Vacuum Capable ( $10^{-6}$  Torr)
- ⊕ Small and Light Weight
- ⊕ Automatic Gain Control
- ⊕ Backlight Compensation
- ⊕ Pixel Defect Correction
- ⊕ Environmentally Sealed Housing
- ⊕ Optional Digital Zoom



### General Description

The RCC-HD13EV/X.X camera is a very rugged and compact high definition color CMOS video camera (X.X = lens focal length, see below) capable of operating in a hard vacuum ( $10^{-6}$  Torr). The camera electronics are well protected inside an environmentally sealed aluminum housing, with a scratch resistant sapphire window. The housing provides complete EMI protection, and can "breathe" through a humidity filter, minimizing maintenance requirements during long term storage.

### Environmental Specifications\*

Storage Temperature	-46° to +71°
Operating Temperature	-40° to +60°
Altitude (Norm.Operational)*	Sea Level to $10^{-6}$ Torr
Altitude (Non-Operational)*	-15,000 ft. to $10^{-6}$ Torr
Explosive Atmosphere	Sea Level to $10^{-6}$ Torr
Storage Humidity	95% (50°C) to 85% (38°C)
Operating Humidity	5% to 100% relative humidity (condensing)
Vibration (Operational)	MIL-STD 810C, 514.2 (VIII), 70 hrs
Shock (Operational)	MIL-STD 810C, 516.2 (I), 30g, 3 dir
EMI	MIL-STD-461, Radiated RS02, RS03, 50V/m RE02

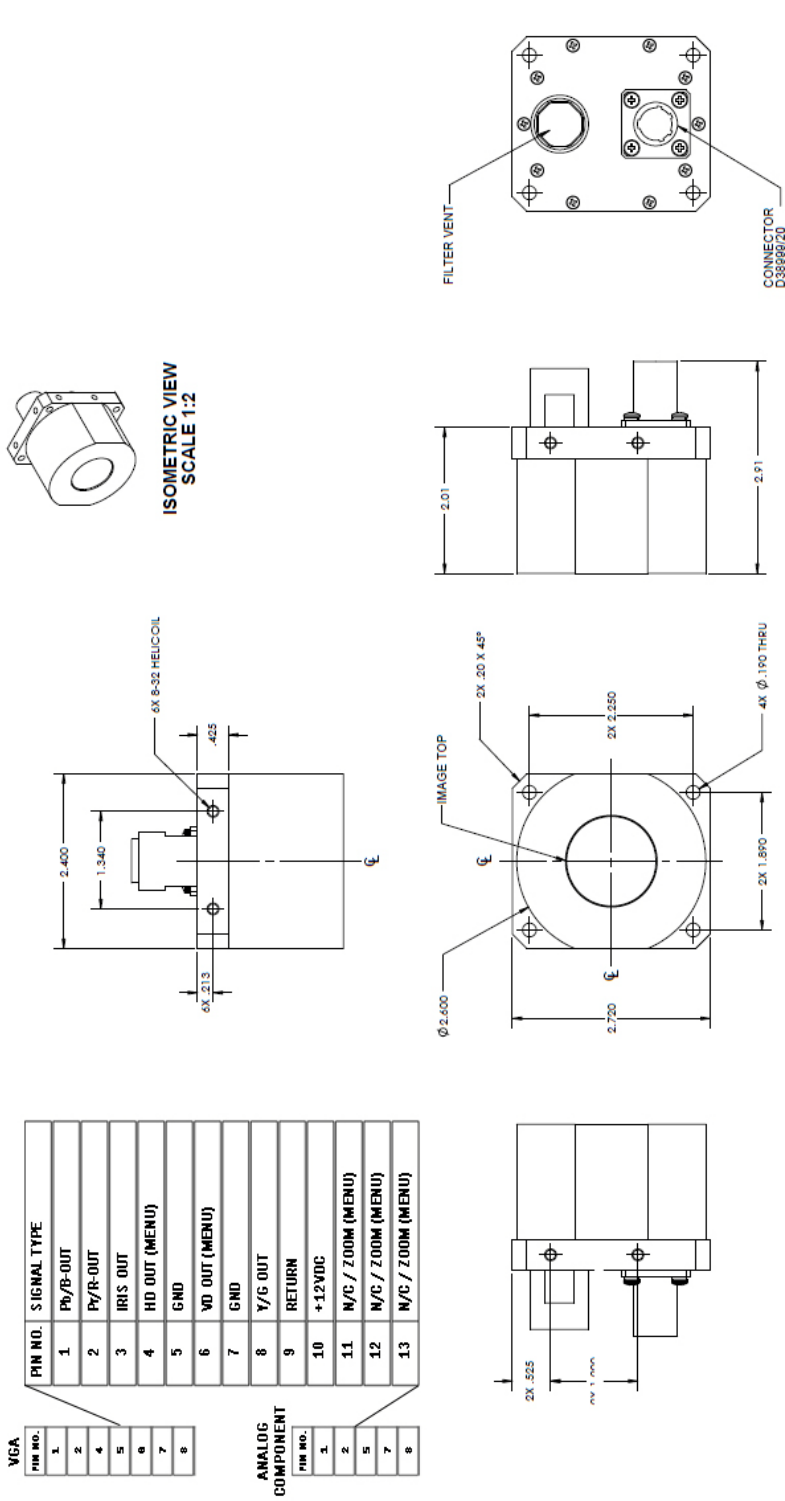
\*Estimates based on similar products, which have been tested

### Specifications

Image Sensor	1/3" type Color CMOS	
Effective Pixels	1329 (H) x 1049 (V)	
Resolution	1280 x 720 (720p)	
Sync. System	Internal	
Video Output Signal	Analog Component 1Vp-p, 75Ω (Selectable)	
Video Output Frequency	60fps: (H) 45 kHz, (V) 60 Hz 59.94fps: (H) 44.95 kHz, 59.94 Hz 50fps: (H) 37.50 kHz, (V) 50 Hz	
Horizontal Resolution	600 TV Lines	
Sensitivity	F4.0 2000 lx	
Minimum Illumination	2.5 lx (AGC +36dB, 50 IRE)	
Gain	AGC ON, OFF, MANUAL (+36dB Max)	
Electronic Shutter	OFF(1/60), FL(1/100), AES(x128~1/10000), MANUAL	
White Balance	ATW 1 (2200K/9000K), ATW 2 (3200K/5600K), INDOOR 1, INDOOR 2, OUTDOOR, MANUAL	
Gamma	γ = 0.45 ~ 1.0 (adjustable)	
Backlight Compensation	Center (3x3), USER (7x7 selectable)	
Pixel Defect Correction	ON / OFF (Max. 63 corrections)	
Edge Correction	SHARP / STD / SOFT	
Power Requirements	DC +9V ~ +15V	
Power Consumption	2.0 W (2.4 W Max) @ 12VDC	
Weight	Approx. 396 g (14 oz)~	
Dimensions	73.91 mm (H) 60.96 mm (W) 69.09 mm (D)	
Optional Lenses (X.X)	FL2.3mm	Hfov= 118°
(all lenses fixed iris, f=2.8)	FL4.0mm	Hfov= 70°
	FL5.6mm	Hfov= 47°

Specifications are subject to change without notice.

04 January, 2012



VGA	PIN NO.	SIGNAL TYPE
	1	Pb/B-OUT
	2	PY/R-OUT
	3	IRIS OUT
	4	HD OUT (MENU)
	5	GND
	6	VD OUT (MENU)
	7	GND
	8	Y/G OUT
	9	RETURN
	10	+12VDC
	11	N/C / ZOOM (MENU)
	12	N/C / ZOOM (MENU)
	13	N/C / ZOOM (MENU)

ANALOG COMPONENT	PIN NO.
	1
	2
	3
	4
	5
	6
	7
	8

Drawing is intended for preliminary information only, and should not be used for design / production. Please contact Sekai sales for the latest top level assembly / installation drawing.

THIS DRAWING CONTAINS CONFIDENTIAL INFORMATION OF SEKAI ELECTRONICS INC. NEITHER THIS DRAWING NOR THE INFORMATION HEREON IS TO BE REPRODUCED OR TRANSMITTED IN ANY FORM OR BY ANY MEANS, WITHOUT WRITTEN AUTHORIZATION FROM SEKAI ELECTRONICS INC.