

### Features

- ⊕ Small and Light Weight
- ⊕ 1/4" Inter-line type Color CCD Sensor
- ⊕ Backlight Compensation
- ⊕ NTSC standard, PAL version available
- ⊕ CCD Iris
- ⊕ Reverse Scan (Mirror) selectable
- ⊕ Environmentally Sealed Housing
- ⊕ Sapphire Window with EMI Protection

### General Description

The RPC-651ER/X.X camera is a very rugged and compact color CCD video camera (X.X = lens focal length, see below). The camera is well protected inside an environmentally sealed aluminum housing, finished in olive-drab anodized and with a scratch resistant sapphire window. The housing provides complete EMI protection, and can "breathe" through a humidity filter, minimizing maintenance requirements during long term storage.

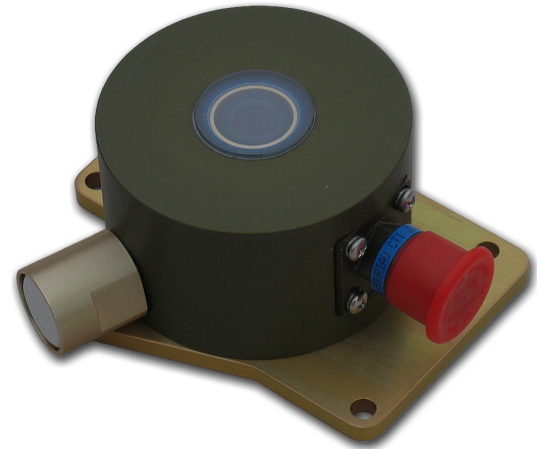
### Environmental Specifications\*

Storage Temperature	-46° to +71°
Operating Temperature	-40° to +60°
Altitude (Norm. Operational)*	Sea Level to 50,000 ft. +
Altitude (Non-Operational)*	-15,000 ft. to 60,000 ft. +
Explosive Atmosphere	Sea Level to 50,000 ft. +
Storage Humidity	95% (50°C) to 85% (38°C)
Operating Humidity	5% to 100% relative humidity (condensing)
Vibration (Operational)	MIL-STD 810C, 514.2 (VIII), 70 hrs
Shock (Operational)	MIL-STD 810C, 516.2 (I), 30g, 3 dir
EMI	MIL-STD-461, Radiated RS02, RS03, 50V/m RE02

\*Estimates based on similar products. which have been tested

### Versions:

RPC-651ER/X.X      NTSC, X.X = Lens FL  
 RPC-651PER/X.X      PAL, X.X = Lens FL



### Specifications

<b>Image Sensor</b>	Inter-line Type 1/4" CCD Image Sensor
<b>Effec. Picture Element</b>	752 H x 582 V (PAL) 768 H x 494 V (NTSC)
<b>Signal System</b>	NTSC (PAL version available)
<b>Video Output</b>	1.0Vpp, 75 ohms
<b>Scanning System</b>	2: 1 Interlace
<b>Synchronization System</b>	Internal
<b>Horizontal Resolution</b>	450 TV Lines
<b>Min. Illumination</b>	1.2 Lux (50 IRE, AGC ON, F1.4)
<b>S/N Ratio</b>	Better than 45dB
<b>Gamma Characteristics</b>	$\gamma = 0.45$
<b>AGC</b>	On/Off (+26 dB max)
<b>Electronic Iris - Off/On</b>	1/100-1/100,000sec. EIA 1/50 (1/60) to 1/120,000 sec.
<b>Power Supply Voltage</b>	10.8-13.2VDC
<b>Power Consumption</b>	110ma @ 12VDC
<b>Connector</b>	D38999/26WA35SN Plug M85049/38-9W Strain Relief
<b>Weight</b>	359 g (12.7 oz)
<b>Dimensions</b>	44.89mm (H) 85.35 mm (W) 96.52 mm (D)
<b>Optional Lenses (X.X)</b>	FL1.9mm      Hfov=100.9° FL3.0mm      Hfov=59.8° (all lenses fixed iris, f=2.8) FL4.0mm      Hfov=45.5° FL6.0mm      Hfov=30.4° FL8.0mm      Hfov=22.1° FL12.0mm      Hfov=15.7

Specifications are subject to change without notice.

21 September, 2011

